



Your Reliable Power Partner



Green Adaptor

5W~280W AC/DC External Power Supplies



Company Profile

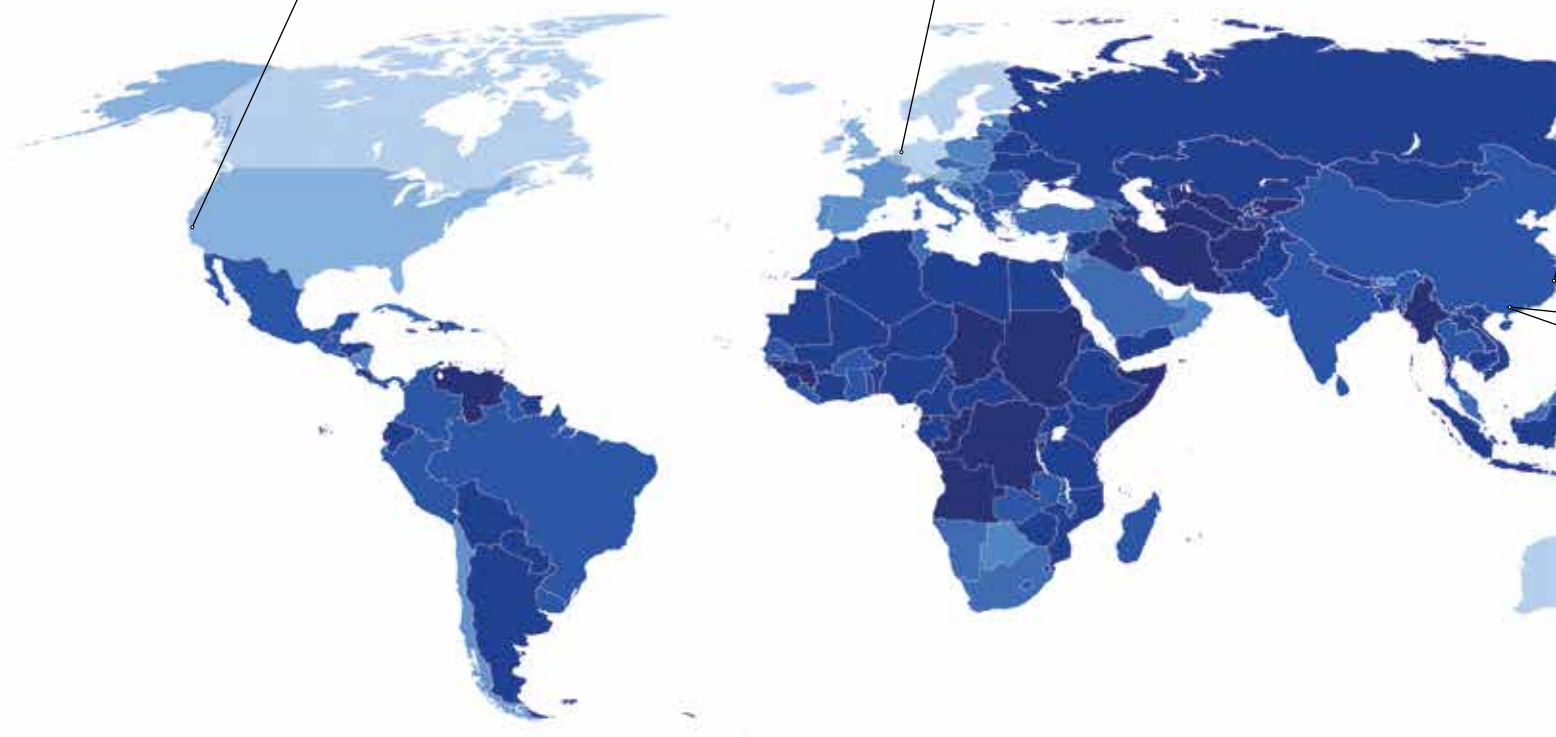
Established in 1982, MEAN WELL is a leading standard switching power supply manufacturers in the world. MEAN WELL currently operates under five companies in Taiwan, China, USA and Europe and three factories in Taiwan, GuangZhou and SuZhou. The product lines include AC/DC switching power supplies, DC/DC converters, waterproof LED drivers, adaptors, DC/AC inverters and battery chargers. We have over 10,000 standard models widely used in medical, automation, communication, LED lighting, display, and office automation fields.

MEAN WELL has invested in the developments of AC/DC external adaptor product lines since 2008, striving for the upgrade of product technology, and the introduction of new regulations. MEAN WELL has already taken the lead in unveiling the green adaptors which comply with the up-to-date energy efficiency regulations (DoE Level VI and CoC version 5) with the ultra low no load power consumption (less than 0.075W to 0.5W) and the highest working efficiency up to 94.5%.

MEAN WELL USA



MEAN WELL EUROPE



MEAN WELL has already constructed the complete product line from 5W to 280W which includes desktop type, wall-mounted type, Class I and Class II type. The whole product line has over 40 series, more than 600 models in total with the output voltages from 5V~48VDC for every kind of the electronic devices. The adaptors of MEAN WELL are highly reliable, they can be operated under -40~+70°C for continuous 24 hours, with 2 to 5 years warranty and comply with the complete international safeties. They can cover the industrial, medical, LED lighting and harsh environment applications and the holistic green adaptor solutions can offer the one stop shopping requirements of customers that MEAN WELL is your best power partner.

With more than 30 years of experience in R&D and production of standard power supplies, MEAN WELL has ten product category covering 10,000 models, to provide "One Stop Shopping" power solutions. Every product in the MEAN WELL range is the result of rigid procedures governing design, design verification test (DVT), design quality test (DQT), component selection, pilot-run production, and mass production.

With more than 200 distributors globally, the MEAN WELL products are distributed to over 80 countries worldwide. The small size orders can expect delivery within 24 hours without MOQ requirement. If you are looking for switching power supply with high reliability, good quality, reasonable price and full series products which can satisfy your various demands, MEAN WELL, a total solution provider, is definitely your first choice!

MEAN WELL SUZHOU



MEAN WELL TAIWAN



MEAN WELL GUANGZHOU



MEAN WELL GUANGZHOU INDUSTRIAL PARK



Reliable Quality

The brand name "MEAN WELL" is defined as "have good intentions". We strongly believe that the product quality is the life of power supply manufacturer. "To become the reliable power partner" has been the motivation for MEAN WELL to grow continuously.

In 1994, MEAN WELL acquired the ISO9001 certification and began to implement the total quality management (TQM) system, which are audited by TUV annually to continuous review and improvement. In April 2013, MEAN WELL acquired the ISO14000 certification and obtained the OHSAS18001 system (ESH, environmental safety and health) in 2015, to take the concept of environmental protection into action, and expect to create a safe and healthy life.



OHSAS18001



ISO9001



ISO14000

MEAN WELL has a complete quality management system. To ensure product quality, 100% burn-in test, function test and pressure test have been applied in manufacturing process, while the MIL-105E sampling method used in IQC, PCBQC (semi-finished products testing) and FQC phases. In the R&D stage, MEAN WELL quality engineers customize the "Test Plan" for each product, to complete the verifications of DFMEA, DVT/DQT, ORT, EMC, drop test, vibration test, thermal shock test, and reliability test.

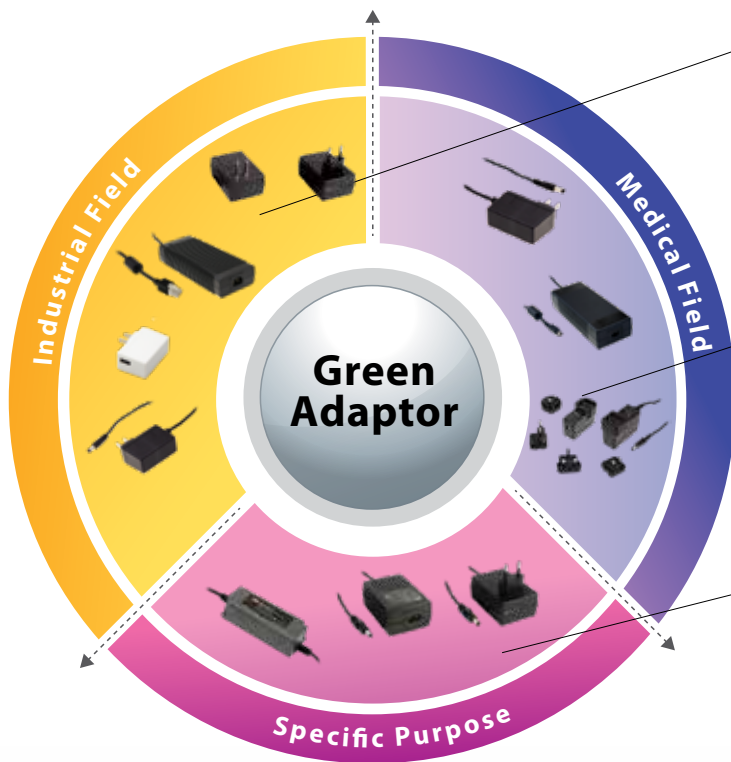




In production stage, the product engineers co-work with process engineers to review the pilot run, semi-finished products quality control, process checking, finished product quality control, and the feedback analysis as well as the production problems occurred.



Product Range



- 5W~280W
- 5V~48V
- Triple output model available
- Global safety certificates
- Level VI / DoE
- 3 years warranty

- 6W~220W
- 5V~48V
- 2xMOPP, BF rated
- Level VI / DoE
- 3 years warranty

- 18W~120W
- Moistureproof (IP67)
- LED driver (C.C. mode)
- Level VI / DoE
- 5 years warranty

AC Inlet List

Type	A IEC320-C14 (Class I)	B IEC320-C8 (Class II)	U 2 Pole USA plug (Class II)	E 2 Pole EURO Plug (Class II)	I Interchangeable (Class II)
IT	GST, GS, GP series	GST, GS, GP series	GST, GS, SGA series	GST, GS, SGA series	GE series
Medical	GSM series	GSM series	GSM series	GSM series	GEM series
Specific	NA	GSC series	OWA series	OWA, GSC series	NA

Optional DC Plug List

Tuning Fork Style				Barrel Style				Lock Style				DIN 5 Pin				DIN 4 Pin with lock			
Type	A	B	C	Type	A	B	C	Type	A	B	C	Type	Pin Assignment		Type	Pin Assignment			
	OD	ID	L		OD	ID	L						Single	Triple		PIN No.	Output		
P1I	5.5	2.1	9.5	P2I	5.5	2.1	9.5	P2S (S761K)	5.53	2.03	12.06	R1B	1	COM	COM	R7B	1	+Vout	
P1J	5.5	2.1	11.0	P2J	5.5	2.1	11.0						2	COM	COM		2	GND	
P1L	5.5	2.5	9.5	P2L	5.5	2.5	9.5						3	Vout	+5V		3	GND	
P1M	5.5	2.5	11.0	P2M	5.5	2.5	11.0						4	COM	-Vout		4	+Vout	
								5	Vout	+Vout									

► Minimum order quantity is varied for different models.



Industrial Field

GST Series (18~280W)

GS Series (5~15W)

SGA Series (12~60W)

GE Series (12~30W)

GP Series (25~50W)

GST Series



Features

- Global certificates
- Universal input 90~264VAC
- Built-in active PFC function (90~280W)
- No load power consumption <0.075W~0.5W
- Energy efficiency Level VI
- Comply with EISA 2007 / DoE, NRCAN, AU/NZ MEPS, Korea K-MEPS, EU ErP and CoC Version 5
- Class II power (without earth pin) for B/U/E-Type
Class I power (with earth pin) for A-Type
- Protections:
Short circuit / Overload / Over voltage /
Over temperature (60~280W)
- Fanless design, wide working temperature: -30~+70°C
- Fully enclosed plastic case
- LED indicator for power on
- Pass LPS
- 3 years warranty



▲ GST18/25/36U
79x 54x 33mm



▲ GST18/25/36E
79x 54x 33mm

18~36W Wall-mounted Type

U/E Type



Order No.	W	□ =	5V	7.5V	9V	12V	15V	18V	24V	28V	48V
GST18U□-P1J	18	Io(A)	3	2	2	1.5	1.2	1	0.75	0.64	0.375
		Eff.(%)	81	85	85	86	87	88	88	88.5	89
GST25U□-P1J	25	Io(A)	4	2.93	2.55	2.08	1.66	1.38	1.04	0.89	0.52
		Eff.(%)	81.5	84.5	85	86.5	87	87	88	88	89
GST36U□-P1J	36	Io(A)	4.3	---	3.11	3	---	---	1.5	---	0.75
		Eff.(%)	82	---	86	87.5	---	---	88.5	---	90

► For more details about global certifications please refer to page 24.



▲ GST18/25/36B
79x 54x 33mm



▲ GST18/25A
93x 54x 36mm



▲ GST40/60A
125x 50x 31.5mm



▲ GST90A
145x 60x 32mm



▲ GST120A
167x 67x 35mm



▲ GST160A
175x 72x 35mm



▲ GST220A
210x 85x 46mm



▲ GST280A
220x 95x 46mm

18~280W Desktop Type

A/B Type



Order No.	W	□ =	5V	7.5V	9V	12V	15V	18V	19V	20V	24V	28V	36V	48V
GST18A□-P1J	18	Io(A)	3	2	2	1.5	1.2	1	---	---	0.75	0.64	---	0.375
GST18B□-P1J		Eff.(%)	81	85	85	86	87	88	---	---	88	88.5	---	89
GST25A□-P1J	25	Io(A)	4	2.93	2.55	2.08	1.66	1.38	---	---	1.04	0.89	---	0.52
GST25B□-P1J		Eff.(%)	81.5	84.5	85	86.5	87	87	---	---	88	88	---	89
GST36B□-P1J	36	Io(A)	4.3	---	3.11	3	---	---	---	---	1.5	---	---	0.75
		Eff.(%)	82	---	86	87.5	---	---	---	---	88.5	---	---	90
GST40A□-P1J	40	Io(A)	5	5.34	4.45	3.34	2.67	2.22	---	---	1.67	---	---	0.84
		Eff.(%)	84.5	87.5	88.5	89.5	90	90	---	---	91	---	---	92
GST60A□-P1J	60	Io(A)	6	6	6	5	4	3.33	---	---	2.5	---	---	1.25
		Eff.(%)	85.5	88.5	89	89.5	89.5	89.5	---	---	90.5	---	---	92
GST90A□-P1M	90	Io(A)	---	---	---	6.67	6	---	4.74	---	3.75	---	---	1.87
		Eff.(%)	---	---	---	89	89.5	---	90	---	90	---	---	91
GST120A□-○	120	Io(A)	---	---	---	8.5	7	---	---	6	5	---	---	2.5
		Eff.(%)	---	---	---	88.5	89	---	---	90	90.5	---	---	91
GST160A□-R7B	160	Io(A)	---	---	---	11.5	9.6	---	---	8	6.67	---	4.44	3.34
		Eff.(%)	---	---	---	90	91	---	---	93	93	---	92	94
GST220A□-R7B	220	Io(A)	---	---	---	15	13.4	---	---	11	9.2	---	6.1	4.6
		Eff.(%)	---	---	---	90	90	---	---	92	93.5	---	93	94.5
GST280A□-C6P	280	Io(A)	---	---	---	21	17	---	---	13	11.67	---	---	5.84
		Eff.(%)	---	---	---	90	90	---	---	92	93	---	---	94

▶ ○ = R7B for 12V, 15V models; =P1M or R7B for 20V, 24V, 48V models

▶ For more details about global certifications please refer to page 24.

GS Series



Features

- Universal input 90~264VAC
- No load power consumption <0.075W
- **Energy efficiency Level VI**
- Comply with EISA 2007/DoE and EU ErP
- Class II power (without earth pin) for B/U/E-Type
Class I power (with earth pin) for A-Type
- Protections: Short circuit / Over voltage / Overload
- Highest operating temperature up to **+70°C**
- Fully enclosed plastic case
- Pass LPS
- Certificates:
A-Type: UL / CUL / TUV / EAC / FCC / CE
B-Type: UL / CUL / TUV / EAC / FCC / CE
U-Type: UL / CUL / EAC / FCC
E-Type: TUV / EAC / CE
- 2 years warranty



5~15W Wall-mounted and Desktop Type



Order No.	W	□ =	5V	7.5V	9V	12V	15V	18V	24V	48V
GS05U-USB	5	Io(A)	1	---	---	---	---	---	---	---
GS05E-USB		Eff.(%)	74.5	---	---	---	---	---	---	---
GS06U-□P1J	6	Io(A)	1	0.8	0.66	0.5	0.4	0.33	0.25	0.125
GS06E-□P1J		Eff.(%)	75	80.5	79.5	79.5	80.5	81.5	82	85
GS15U-□P1J	15	Io(A)	2.4	1.6	1.66	1.25	1	0.83	0.625	0.31
GS15E-□P1J		Eff.(%)	80	82.5	85	85	85	85	85.5	87
GS15A□-P1J	15	Io(A)	2.4	1.6	1.66	1.25	1	0.83	0.625	0.31
GS15B□-P1J		Eff.(%)	80	82.5	85	85	85	85	85.5	87

SGA Series



Features

- Slim size
- Universal input 90~264VAC
- No load power consumption <0.075W (<0.15W for SGA60 9~48V)
- Energy efficiency Level VI
- Comply with EISA 2007/DoE, EU ErP
- Class II power (without earth pin)
- Protections: Short circuit / Overload / Over voltage
- Working temperature: -20~+60°C by models
- Pass LPS
- Fully enclosed plastic case
- LED indicator for power on (SGA60 only)
- Certificates:
U-Type: UL / CUL / EAC / CB / FCC
E-Type: TUV / EAC / CB / CE
CH-Type: CCC
- 3 year warranty



12~60W Slim Wall-mounted Type

U/E Type



Order No.	W	□ =	5V	7.5V	9V	12V	15V	18V	24V	48V
SGA12U□-P1J*	12	Io (A)	2.4	1.6	1.33	1	0.8	0.666	0.5	0.25
SGA12E□-P1J*		Eff. (%)	80	83	83	83	84.5	85	86	88
SGA18U□-P1J	18	Io (A)	3	---	2	1.5	1.2	1	0.75	0.375
SGA18E□-P1J		Eff. (%)	80.5	---	84.5	84	84	84.5	85	86
SGA25U□-P1J	25	Io (A)	4	2.93	2.77	2.08	1.66	1.38	1.04	0.52
SGA25E□-P1J		Eff. (%)	82	85.5	86	86	86.5	86.5	87	88.5
SGA40U□-P1J	40	Io (A)	5	---	4.44	3.33	2.66	2.22	1.67	0.84
SGA40E□-P1J		Eff. (%)	84	---	87	86.5	86.5	87	88	89
SGA40CH□-P1J										
SGA60U□-P1J	60	Io (A)	6	6	5.5	5	4	3.33	2.5	1.25
SGA60E□-P1J		Eff. (%)	84	86	87	88	87	88	88	88

▶ USB type output for 12W 5V model only.

GE Series



Features

- Interchangeable AC plugs (plug kit sold separately)
- Universal input 90~264VAC
- No load power consumption <0.075W
- Energy efficiency Level VI
- Comply with EISA 2007 and EU ErP
- Class II power (without earth pin)
- Protections: Short circuit / Over voltage / Overload
- Working temperature: -10~+50°C
- Fully enclosed plastic case
- LED indicator for power on
- Pass LPS
- Certificates: UL / CUL / TUV / CCC / RCM / FCC / CE / EAC
- 2 years warranty



▲ GE12
70.7x 40x 38.8mm

▲ GE18/24/30
81x 43x 40.5mm

12~40W Interchangeable Wall-mounted Type

I Type



Order No.	W	□ =	5V	7.5V	9V	12V	15V	18V	24V	48V
GE12I□-P1J	12	Io (A)	2	1.33	1.33	1	0.8	0.83	0.625	---
		Eff. (%)	80	82	84	84	85	85	85.5	---
GE18I□-P1J	18	Io (A)	2.4	1.73	2	1.5	1.2	1	0.75	0.375
		Eff. (%)	80.5	82.5	85	86	86.5	87	87	87
GE24I□-P1J	24	Io (A)	3	2	2.22	2	1.6	1.33	1	0.5
		Eff. (%)	81	83	85.5	86	86	87	87.5	89
GE30I□-P1J	30	Io (A)	---	---	---	2.5	2	1.66	1.25	---
		Eff. (%)	---	---	---	84	86	87	87	---

Interchangeable AC Plug Specifically for GE12/18/24/30

AC Plug Type and Order No.				
AC Plug-AU	AC Plug-UK	AC Plug-EU	AC Plug-US	AC Plug-MIX
Australian Type	U.K. Type	European Type	U.S. Type	Mixed Four Type

▶ The main body unit and AC plug should be ordered separately. The main body needs to be used along with anyone of the AC plug.

GP Series



Features

- Universal input 90~264VAC
- No load power consumption <0.3W
- Energy efficiency Level VI
- Comply with EISA 2007/DoE, EU ErP
- Class I power unit (with earth pin) for A type;
Class II power unit (without earth pin) for B type
- Protections:
Short circuit / Overload / Over voltage /
Over temperature (25W only)
- Working temperature: -20~+70°C
- LED indicator for power on
- Dual output available (optional)
- Certificates: UL / CUL / TUV / CB / FCC / CE / EAC
- 3 years warranty



▲ GP25A



▲ GP25B

107.5x 67x 36mm



▲ GP50A

146x 75.5x 43mm

25~50W Triple Output Desktop Type

A/B Type



Order No.	W	□ = Vo (V)	13A			13D			14E			58F(optional)		
			5	12	-5	5	12	-12	5	15	-15	16	48	-16
GP25A□-R1B	25	Io (A)	2.5	1.2	0.3	2.5	1	0.3	2.5	0.8	0.3	1.05	0.087	1.05
GP25B□-R1B		Eff. (%)	80			80			80.5			85		
GP50A□-R1B	50	Io (A)	4	2	0.5	4	2	0.5	4	1.5	0.5	2	0.15	2
		Eff. (%)	84			84			84.5			86		



Medical Field

GSM Series (6~220W)

GEM Series (12~60W)

GSM Series



Features

- Universal input 80~264VAC
- Built-in active PFC function (90~220W)
- **Medical safety approved (2xMOPP)** according to AAMI/ANSI ES60601-1 and IEC/EN60601-1 3rd edition
- ANSI/AAMI EN60601-1-11, EN60601-1-11 **household** medical regulations for Class II unit
- **Suitable for BF application** with appropriate system consideration (except for 40~220W A-Type)
- Low leakage current <50μA~100μA
- No load power consumption <0.1W~0.3W
- Energy efficiency Level VI (6W and 18~60W 5~9V for Level V)
- Comply with EISA 2007/DoE, NRCAN, AU/NZ MEPS, EU ErP and meet CoC Version 5
- Class II power(without earth pin) for B/U/E-Type
Class I power(with earth pin) for A-Type
- Protections: Short circuit / Overload / Over voltage
- Wide working temperature: **-30~+70°C** by models
- Fully enclosed plastic case
- LED indicator for power on(except for GSM06/12/60U,E)
- Optional lock type DC plug
- Certificates: A-Type: UL / CUL / TUV / CB / EAC / FCC / CE
B-Type: UL / CUL / TUV / CB /EAC / FCC / CE
U-Type: UL / CUL / CB / EAC / FCC
E-Type: TUV / CB / EAC / CE
- 3 years warranty



▲ GSM06U
66x 32x 42.5mm



▲ GSM06E
66x 32x 42.5mm



▲ GSM12U-USB ▲ GSM12U
62.2x 45.5x 27.4mm



▲ GSM12E-USB ▲ GSM12E
62.2x 45.5x 27.4mm

6~12W Wall-mounted Type

U/E Type



Order No.	W	□ =	5V	6V	7.5V	9V	12V	15V	18V	24V	48V
GSM06U□-P1J	6	Io(A)	1.2	1	0.8	0.66	0.5	0.4	0.33	0.25	---
GSM06E□-P1J		Eff.(%)	68	74	74	76	77	79	80	82	---
GSM12U□-P1J	12	Io(A)	2.4	---	1.6	1.33	1	0.8	0.66	0.5	0.25
GSM12E□-P1J		Eff.(%)	80	---	82	82	82.5	84	85	85	87

▶ USB type output for GSM12U / GSM12E 5V model only.

GSM Series



▲ GSM18/25/36U
79x 54x 33mm



▲ GSM60U
75.5x 32x 47.5mm



▲ GSM18/25/36E
79x 54x 33mm



▲ GSM60E
75.5x 32x 47.5mm

18~60W Wall-mounted Type

U/E Type



Order No.	W	□ =	5V	7.5V	9V	12V	15V	18V	24V	48V
GSM18U□-P1J	18	Io(A)	3	2	2	1.5	1.2	1	0.75	0.375
GSM18E□-P1J		Eff.(%)	80	83	84	85	85.5	86	87	88
GSM25U□-P1J	25	Io(A)	4	2.93	2.77	2.08	1.66	1.38	1.04	0.52
GSM25E□-P1J		Eff.(%)	80	83	84	86	86	86	87	88
GSM36U□-P1J	36	Io(A)	4.5	4.32	4	3	2.4	2	1.5	0.75
GSM36E□-P1J		Eff.(%)	80	83	84	86	87	87	87	88
GSM60U□-P1J	60	Io(A)	6	6	5.5	4.5	4	3.33	2.5	1.25
GSM60E□-P1J		Eff.(%)	80	85	87	86	88	88	88	90

Medical / Hospital Grade AC Power Cord

Order No.: YP18+YC12





▲ GSM40/60A
125x 50x 31.5mm



▲ GSM90A
145x 60x 32mm



▲ GSM120A
167x 67x 35mm



▲ GSM160A
175x 72x 35mm



▲ GSM220A
210x 85x 46mm



▲ GSM18/25/36B
79x 54x 33mm



▲ GSM40/60B
125x 50x 31.5mm



▲ GSM90B
145x 60x 32mm



▲ GSM120B
167x 67x 35mm



▲ GSM160B
175x 72x 35mm



▲ GSM220B
210x 85x 46mm

18~220W Desktop Type

A/B Type



Order No.	W	□ =	5V	7.5V	9V	12V	15V	18V	19V	20V	24V	48V
GSM18B□-P1J	18	Io (A)	3	2	2	1.5	1.2	1	---	---	0.75	0.375
		Eff. (%)	80	83	84	85	85.5	86	---	---	87	88
GSM25B□-P1J	25	Io (A)	4	2.93	2.77	2.08	1.66	1.38	---	---	1.04	0.52
		Eff. (%)	80	83	84	86	86	86	---	---	87	88
GSM36B□-P1J	36	Io (A)	4.5	4.32	4	3	2.4	2	---	---	1.5	0.75
		Eff. (%)	80	83	84	86	87	87	---	---	87	88
GSM40A□-P1J	40	Io (A)	5	5.34	4.45	3.34	2.67	2.22	---	---	1.67	0.84
		Eff. (%)	81	85.5	86	88	88.5	89.5	---	---	90	91
GSM60A□-P1J	60	Io (A)	6	6	6	5	4	3.33	---	---	2.5	1.25
		Eff. (%)	81.5	86	87.5	88	88.5	89	---	---	90	91.5
GSM90A□-P1M	90	Io (A)	---	---	---	6.67	6	---	4.74	---	3.75	1.87
		Eff. (%)	---	---	---	88	89	---	89	---	90	91
GSM120A□-R7B	120	Io (A)	---	---	---	8.5	7	---	---	6	5	2.5
		Eff. (%)	---	---	---	88	89	---	---	89	90	91.5
GSM160A□-R7B	160	Io (A)	---	---	---	11.5	9.6	---	---	8	6.67	3.34
		Eff. (%)	---	---	---	90	91	---	---	92.5	93	94
GSM220A□-R7B	220	Io (A)	---	---	---	15	13.4	---	---	11	9.2	4.6
		Eff. (%)	---	---	---	90	90	---	---	92	93.5	94.5

▶ Energy efficiency Level V for GSM18/25/36/40/60 5~9V models.

GEM Series



Features

- Interchangeable AC plugs (plug kit sold separately)
- Universal input 80~264VAC
- Medical safety approved (2xMOPP) according to AAMI/ANSI ES60601-1 and IEC/EN60601-1 3rd edition
- ANSI/AAMI EN60601-1-11, EN60601-1-11 household medical regulations for Class II unit
- Suitable for BF application with appropriate system consideration
- Low leakage current <100μA
- No load power consumption <0.075W (<0.1W for GEM30I/40I)
- Energy efficiency Level VI (except for GEM40I/60I 5~9V)
- Comply with EISA 2007/DoE and EU ErP
- Protections: Short circuit / Overload / Over voltage
- Working temperature: -25~+70°C by models
- Fully enclosed plastic case
- Optional lock type DC plug
- 3 years warranty



▲ GEM12I
73.9x 39x 48.5mm

▲ GEM18I/30I/40I/60I
75.5x 39.1x 56.2mm

12~60W Interchangeable Wall-mounted Type

I Type



Order No.	W	□ =	5V	7.5V	9V	12V	15V	18V	24V	48V
GEM12I□-P1J	12	Io (A)	2.4	1.6	1.33	1	0.8	0.67	0.5	0.25
		Eff. (%)	80	82	82	82.5	84	85	85	87
GEM18I□-P1J	18	Io (A)	3	---	2	1.5	1.2	1	0.75	0.38
		Eff. (%)	80	---	84	84	84	84	85	87
GEM30I□-P1J	30	Io (A)	4	3.33	3.33	2.5	2	1.66	1.25	0.62
		Eff. (%)	82	86	87	87	87	88	88.5	90
GEM40I□-P1J	40	Io (A)	5	---	4	3.33	2.66	2.22	1.67	0.8
		Eff. (%)	84	---	87	88	88	88	89	90.5
GEM60I□-P1J	60	Io (A)	6	6	5.5	4.5	4	3.33	2.5	1.25
		Eff. (%)	80	85	87	88	88	88	88	90

▶ USB type output for GEM12I 5V model only

Interchangeable AC Plug Specifically for GEM12I/18I/30I/40I/60I

AC Plug Type and Order No.				
AC Plug-AU2	AC Plug-UK2	AC Plug-EU2	AC Plug-US2	AC Plug-MIX
Australian Type	U.K. Type	European Type	U.S. Type	Mixed Four Type

▶ The main body unit and AC plug should be ordered separately. The main body needs to be used with any one of the AC plug.



Specific Purpose

OWA Series (60~120W)

GSC Series (18~40W)

OWA Series



Features

- Moistureproof, IP67 protection level
- Universal input 90~264VAC
- Built-in active PFC function(90~120W)
- Constant voltage + Constant current mode
- No load power consumption <0.15W
- Energy efficiency Level VI
- E-Type: EU ErP ; meet CoC Version 5 (OWA-60E/90E)
U-Type: EISA 2007/DoE and NRCan
- Class II power (without earth pin)
- Protections: Short circuit / Over current / Over voltage / Over temperature
- Fanless design, working temperature: -40~+70°C by models
- Fully enclosed plastic case
- Suitable for general electronics applications at highly dusty or damp environment
- 5 years warranty



	U-Type		E-Type	
AC Input Plug				
DC Output Plug	OWA-60U	OWA-90U/120U	OWA-60E	OWA-90E/120E

60~120W Desktop Type

U/E Type



Order No.	W	□ =	12V	15V	20V	24V	30V	36V	42V	48V	54V
OWA-60U-□	60	Io(A)	5	4	3	2.5	2	1.67	1.5	1.25	1.12
OWA-60E-□		Eff.(%)	88	89	89	90	90	90	90	91	91
OWA-90U-□	90	Io(A)	7.5	6	4.5	3.75	3	2.5	2.15	1.88	1.67
OWA-90E-□		Eff.(%)	89	90	90	90	90	91	91	91	91
OWA-120U-□	120	Io(A)	9.6/10 (E)/(U)	8	6	5	4	3.4	2.9	2.5	2.3
OWA-120E-□		Eff.(%)	87.5	89	90	90.5	90	90	90.5	90.5	90.5

GSC Series



Features

- LED driver, constant current mode
- Universal input 90~277VAC
- No load power consumption <0.15W
- Built-in active PFC function
- Isolation class II, no F.G.
- Protection: Short circuit
- Working temperature: -30~+50°C
- Fully isolated plastic case with IP40 level
- IEC320-C8 or 2 pole EURO plug
- Low cost, high reliability
- Suitable for indoor LED lighting applications
- 3 years warranty



▲GSC18/25/40B

▲GSC18/25/40E

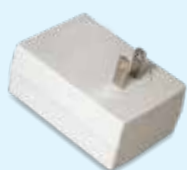
79x 54x 33mm

18~40W Desktop Type

B/E Type



Order No.	W	□ =	350mA	500mA	700mA	1050mA	1400mA
GSC18B-□	18	Vo (V)	26~52	18~36	13~26	8~17	6~13
GSC18E-□		Eff. (%)	89	88.5	88.5	87	85.5
GSC25B-□	25	Vo (V)	36~72	26~52	18~36	12~24	9~18
GSC25E-□		Eff. (%)	89.5	89.5	88.5	87.5	86
GSC40B-□	40	Vo (V)	50~100	40~80	29~58	19~38	14~28
GSC40E-□		Eff. (%)	89.5	89.5	88.5	87.5	87



Optional Grayish Model

Optional grayish models (PANTONE Cool Gray 2C) are available for GST18/25/36, GSM18/25/36 and GSC18/25/40 series. MOQ is 200pcs per model. Please contact MEAN WELL sales representatives for more details.

Selection Guide

Industrial



Type	Model		Power (W)	Input (VAC)	Output (VDC)	Dimension (mm)	Key features			
	Picture	Series name								
Interchangeable		GE12	12	90~264	5, 7.5, 9, 12, 15, 18, 24	70.7 x 40 x 38.8	 			
		GE18	18		5, 7.5, 9, 12, 15, 18, 24, 48	81 x 43 x 40.5				
		GE24	24		12, 15, 18, 24					
		GE30	30							
Slim		SGA12U/E-USB	12	90~264	5	62.2 x 27.4 x 39.7	 			
		SGA12U/E	12		5, 7.5, 9, 12, 15, 18, 24, 48					
		SGA18U/E	18		5, 9, 12, 15, 18, 24, 48	75.5 x 32 x 47.5				
		SGA25U/E	25		5, 7.5, 9, 12, 15, 18, 24, 48					
		SGA40U/E/CH	40		5, 9, 12, 15, 18, 24, 48					
		SGA60U/E	60		5, 7.5, 9, 12, 15, 18, 24, 48			93.5 x 35 x 51.5		
Wall-mounted		GS05U/E-USB	5	90~264	5	U: 41.86 x 32.76 x 23.8 E: 41.54 x 30.5 x 20	 			
		GS06U/E	6		5, 7.5, 9, 12, 15, 18, 24, 48	66 x 32 x 42.5				
		GS15U/E	15		5, 7.5, 9, 12, 15, 18, 24, 48	71 x 34 x 50				
		GST18U/E	18		85~264	5, 7.5, 9, 12, 15, 18, 24, 28, 48		79 x 54 x 33	 	
			GST25U/E							25
			GST36U/E							36

Global safety certificates

Selection Guide

Industrial



Type	Model		Power (W)	Input (VAC)	Output (VDC)	Dimension (LxWxH) (mm)	Key features
	Picture	Series name					
Desktop		GS15A/B	15	90~264	5, 7.5, 9, 12, 15, 18, 24, 48	100 x 58.5 x 32.8	 Class I (A-Type) Class II (B-Type)
		GST18A/B	18	85~264	5, 7.5, 9, 12, 15, 18, 24, 28, 48	A: 93 x 54 x 36 B: 79 x 54 x 33	
	GST25A/B	25					
	GST36B	36	5, 9, 12, 24, 48				
		GST40A	40	90~264	5, 7.5, 9, 12, 15, 18, 24, 48	125 x 50 x 31.5	 Class I (A-Type) Class II (B-Type) Global safety certificates
		GST60A	60				
		GST90A	90		12, 15, 19, 24, 48	145 x 60 x 32	
		GST120A	120	85~264	12, 15, 20, 24, 36, 48 (36V for GST160A only)	167 x 67 x 35	
		GST160A	160			175 x 72 x 35	
		GST220A	220			210 x 85 x 46	
		GST280A	280			220 x 95 x 46	
		GP25A/B	25	90~264	5/12/-5, 5/12/-12, 5/15/-15, 16/48/-16	107.5 x 67 x 36	 Class I (A-Type) Class II (B-Type) Triple Output
		GP50A	50			146 x 75.5 x 43	

Selection Guide

Medical



Type	Model		Power (W)	Input (VAC)	Output (VDC)	Dimension (LxWxH) (mm)	Key features				
	Picture	Series name									
Interchangeable		GEM12I	12	80~264	5, 7.5, 9, 12, 15, 18, 24, 48	73.9 x 39 x 48.5					
		GEM18I	18		5, 9, 12, 15, 18, 24, 48	75.5 x 39.1 x 56.2					
		GEM30I	30		5, 7.5, 9, 12, 15, 18, 24, 48						
		GEM40I	40		5, 9, 12, 15, 18, 24, 48						
		GEM60I	60		5, 7.5, 9, 12, 15, 18, 24, 48						
Wall-mounted		GSM06U/E	6	80~264	5, 6, 7.5, 9, 12, 15, 18, 24	66 x 32 x 42.5	 (6W and 18~36W 5~9V for Level V)				
		GSM12U/E	12		5, 7.5, 9, 12, 15, 18, 24, 48	62.2 x 27.4 x 45.5					
		GSM18U/E	18			79 x 54 x 33					
		GSM25U/E	25								
		GSM36U/E	36								
		GSM60U/E	60		75.5 x 32 x 47.5						
Desktop		GSM18B	18	80~264	5, 7.5, 9, 12, 15, 18, 24, 48	79 x 54 x 33	 (except for 40~220W A-Type) (18~60W 5~9V for Level V)				
		GSM25B	25								
		GSM36B	36								
		GSM40A/B	40		5, 7.5, 9, 12, 15, 18, 24, 48	125 x 50 x 31.5					
		GSM60A/B	60								
		GSM90A/B	90								
		GSM120A/B	120		12, 15, 19, 24, 48	145 x 60 x 32					
		GSM160A/B	160								
		GSM220A/B	220								

Specific Purpose



Type	Model		Power (W)	Input (VAC)	Output (VDC)	Dimension (LxWxH) (mm)	Key features
	Picture	Series name					
Moisture proof		OWA-60U/E	60	90~264 (180~264 for OWA-120E)	12, 15, 20, 24, 30, 36, 42, 48, 54	130 x 53 x 35	 IP67 for power body
		OWA-90U/E	90			171 x 63 x 37.5	
		OWA-120U/E	120			191 x 63 x 37.5	
LED Lighting		GSC18B/E	18	90~277	350, 500, 700, 1050, 1400 mA	79 x 54 x 33	 Constant current output mode, IP40 design
		GSC25B/E	25				
		GSC40B/E	40				

GST Global Certification Chart



Country	Safety	GST18 (A/B/U/E)	GST25 (A/B/U/E)	GST36 (B/U/E)	GST 40A	GST 60A	GST 90A	GST 120A	GST 160A	GST 220A	GST 280A
IEC	CB IEC62368-1	✓	✓	✓	✓	✓	✓	✓	✓	✓	✓
US/Canada	 UL62368-1	✓ (A/B/U)	✓ (A/B/U)	✓ (B/U)	✓	✓	✓	✓	✓	✓	✓
Europe	 TUV EN62368-1	✓ (A/B/E)	✓ (A/B/E)	✓ (B/E)	✓	✓	✓	✓	✓	✓	✓
Taiwan	 BSMI CNS14336	✓ (A/B/U)	✓ (A/B/U)	✓ (B/U)	✓	✓	✓	✓	✓	✓	✓
China	 CCC GB4943	✓ (A/B)	✓ (A/B)	✓ (B)	✓	✓	✓	✓	✓	✓	✓
Japan	 PSE 60950.1	✓ (A/B)	✓ (A/B)	✓ (B)	✓	✓	✓	✓	✓	✓	✓
Australia / New Zealand	 AS/NZS 60950.1	✓ (A/B)	✓ (A/B)	✓ (B)	✓	✓	✓	✓	✓	✓	✓
Korea	 KC K60950-1	✓ (A/B)	✓ (A/B)	✓ (B)	✓	✓	✓	✓	✓	✓	✓
Malaysia	 SIRIM MS IEC60950-1 (Optional)	✓ (A/B/E)	✓ (A/B/E)	✓ (B/E)	✓	✓	✓	✓	✓	✓	✓
India	 BIS IS13252	✓ (A/B)	✓ (A/B)	✓ (B)	✓	✓	✓	✓	✓	✓	✓
Russia/ Belarus/ Kazakhstan/ Kyrgyzstan/ Armenia	EAC EAC TP TC004/020	✓	✓	✓	✓	✓	✓	✓	✓	✓	✓

▶ Please contact MEAN WELL sales representatives for the need of new SIRIM label.

Solutions

With more than 30 years experience, MEAN WELL, the leading brand of the power supply and LED driver, officially launches five solution websites, including LED lighting, LED display, Medical power, KNX smart building, and System power supply. Through these five websites, we hope to share our years of experience and knowledge of power supplies with you.

In each solution website, a comprehensive content was offered, covering from basic model recommendations to the thorough solutions offer for each application. If you are looking for those five related solutions, come and visit our website for answers! We hope our website can be another helpful resource for your next design.



Choose the right PSU & LED Drivers to Create A Brand New Experience for Customers



LED Lighting Solution

- Outdoor Lighting
- Indoor Lighting
- High Bay Lighting
- Horticulture Lighting
- Specific Lighting



LED Display Solution

- Indoor Full Color
- Outdoor Full Color
- Fine Pitch
- Rental



Medical Power Solution

- Diagnostic Imaging System
- Analysis and Laboratory
- Home Healthcare
- Rehabilitation and Assistive Device



KNX Smart Building Power Solution

- Indoor Lighting Control
- Heating System Control
- Blinder System Control
- Total Power Solution



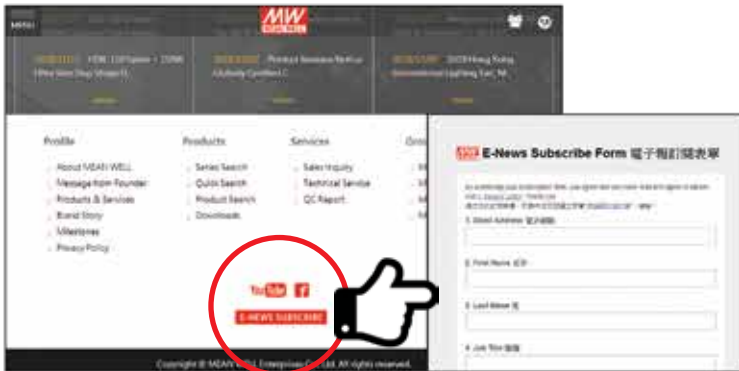
System Power Solution

- Industrial Application
- Lighting Application
- Charging Application
- ICT Application



MEAN WELL E-news

Find the "SUBSCRIBE" at the footer of MEAN WELL website. Fill in the E-News Subscribe Form, and last click the "SUBSCRIBE". Then, our confirmation e-mail will be sent to you.



MEAN WELL NEWS APP



Install MEAN WELL NEWS APP, and you won't miss our latest news.



Social Media

01



02



03



04



05



01 YouTube

- Scan the QR code
- Press "SUBSCRIBE" button
- Turn on the bell. So you won't miss any videos.



03 Facebook

- Scan the QR code
- Find the icon and choose "FOLLOW"
- Don't forget to "Like" us.



02 LinkedIn

- Scan the QR code
- Navigate into MEAN WELL page and "Following" us.



MWUSA

MWEU

04 WeChat

- Search official account "MEAN WELL" in WeChat APP
- Click the "FOLLOW" button



05 YouKu

- Scan the QR code
- Press the "SUBSCRIBE" button on the top



Taiwan

MEAN WELL ENTERPRISES CO., LTD. (Headquarters)

No. 28, Wuquan 3rd Road, Wugu District,
New Taipei City, Taiwan, 24891

Tel +886-2-2299-6100(rep.)

Fax +886-2-2299-6200(rep.)

+886-2-2298-0818(sales)

e-mail info@meanwell.com

Web www.meanwell.com

U.S.A.

MEAN WELL USA, INC.

44030 Fremont Blvd., Fremont, CA 94538, U.S.A.

Tel +1-510-683-8886

Fax +1-510-683-8899

e-mail info@meanwellusa.com **Web** www.meanwellusa.com

Europe

MEAN WELL EUROPE B.V.

Langs de Werf 8, 1185XT Amstelveen, the Netherlands

Tel +31-20-758-6000

Fax +31-20-758-6001

e-mail info@meanwell.eu **Web** www.meanwell.eu



info@meanwell.com
www.meanwell.com



China

MEAN WELL (GUANGZHOU) ELECTRONICS CO., LTD.

No.11, Jingu South Road, Huadong Town,
Huadu District, Guangzhou, Guangdong, China

Tel +86-20-3773-7100 / 400-800-3608(sales)

+86-10-5200-1817(Beijing Office)

+86-755-2359-1630(Shenzhen Office)

+86-180-0058-4748(Chengdu Office)

R&D Center

2F, A Building, Yuean Industry Park, Huangcun,
Dongpu Town, Tianhe District, Guangzhou, China

Tel +86-20-2887-1200(rep.) **Fax** +86-20-8201-0507

e-mail info@meanwell.com.cn **Web** www.meanwell.com.cn

SUZHOU MEAN WELL TECHNOLOGY CO., LTD.

No.77, Jian-Ming Rd. Dong-Qiao, Pan-Yang Ind. Park,
Huang-Dai Town, Xiang-Cheng District,
Suzhou, Jiang-Su, China

Tel +86-512-6508-8600

Fax +86-512-6508-8700

e-mail info@meanwell.cc

Web www.meanwell.cc

