

Comprehensive Range of Protective Vent Series

Reliable Solution Supporting Long Service Life To Devices



Amphenol LTW is proud to present a comprehensive range of protective Vent product line with Metallic/Plastic Snap-in/Stainless Steel versions that equalize the pressure inside/outside the sealed enclosure and prevent heat dissipation of electronic components from shortening devices service life and affecting components performances.



With waterproof IP68/IP69K ingress protection and hydrophobic/oleophobic membranes keep liquids, oils, and moisture out and reduces condensation in sealed enclosure.

VENT | Applications



Industrial Automation



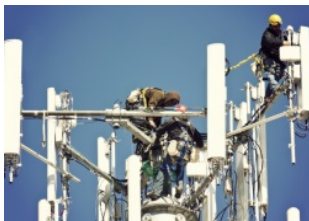
Farm Automation



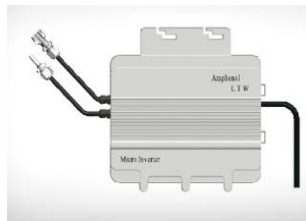
Outdoor Broadband Wireless Access



LED Lighting



IP Closed-Circuit Television (IP CCTV) & Security



Renewable Energy



Marine Electronics



Hybrid Electric Vehicle

Specification

Ordering Information	VENT-MS1NMS-O8001	VENT-MS1NME-O8001	VENT-PQ1NBK-O8001 (Black) VENT-PQ1NGY-O8001 (Gray) VENT-PQ1NBK-O8002 (Black) VENT-PQ1NGY-O8002 (Gray)	VENT-PQ1NBK-N8001 (Black) VENT-PQ1NGY-N8001 (Gray) VENT-PQ1NBK-N8002 (Black) VENT-PQ1NGY-N8002 (Gray)	
Product Image					
Dimension					
Assembly Type	Screw M12x1.5	Screw M12x1.5	Snap-in	Snap-in	
Specification	Environment Temperature	-40°C~+125°C	-40°C~+125°C	-40°C~+125°C	-40°C~+125°C
	Waterproof Rating	IP68 (2M · 60mins), IP69K	IP68 (2M · 60mins), IP69K	IP68 (2M · 60mins), IP69K	IP68 (2M · 60mins), IP69K
	Air Permeability	> 1600ml/min @70mbar	> 1760ml/min @70mbar	> 550 - 3000ml/min @70mbar	> 550 - 3000ml/min @70mbar
	Water Entry Pressure	> 60kPa	> 60kPa	> 60kPa	> 60kPa
Material	Housing	SUS316L	Zinc Alloy, Nickel Plated	Nylon, 94V-0, UV Resistance, UL	Nylon, 94V-0, UV Resistance, UL
	Membrane	ePTFE (Oleophobic)	ePTFE (Oleophobic)	ePTFE (Oleophobic)	ePTFE (Hydrophobic)
	Sealing	O-ring: Silicone	O-ring: Silicone	O-ring: Silicone	O-ring: Silicone
	Housing Color	Silver	Silver	Gray / Black	Gray / Black

Ordering Information	VENT-PS1NGY-N8001 (Gray) VENT-PS1NBK-N8001 (Black)	VENT-PS1NGY-N8002 (Gray) VENT-PS1NBK-N8002 (Black)	VENT-PS1NGY-O8001 (Gray) VENT-PS1NBK-O8001 (Black)	VENT-PS1NGY-O8002 (Gray) VENT-PS1NBK-O8002 (Black)	
Product Image					
Dimension					
Assembly Type	Screw M12x1.5	Screw M12x1.5	Screw M12x1.5	Screw M12x1.5	
Specification	Environment Temperature	-40°C~+125°C	-40°C~+125°C	-40°C~+125°C	-40°C~+125°C
	Waterproof Rating	IP68 (2M · 60mins), IP69K	IP68 (2M · 60mins)	IP68 (2M · 60mins), IP69K	IP68 (2M · 60mins), IP69K
	Air Permeability	> 1000ml/min @70mbar	> 3000ml/min @70mbar	> 550ml/min @70mbar	> 1000ml/min @70mbar
	Water Entry Pressure	> 60kPa	> 60kPa	> 60kPa	> 60kPa
Material	Housing	Nylon, 94V-0, UV Resistance, UL	Nylon, 94V-0, UV Resistance, UL	Nylon, 94V-0, UV Resistance, UL	Nylon, 94V-0, UV Resistance, UL
	Membrane	ePTFE (Hydrophobic)	ePTFE (Hydrophobic)	ePTFE (Oleophobic)	ePTFE (Oleophobic)
	Sealing	O-ring: Silicone	O-ring: Silicone	O-ring: Silicone	O-ring: Silicone
	Housing Color	Gray / Black	Gray / Black	Gray / Black	Gray / Black

Find out more
new product here

For more information, please contact:
Luc Kan | Sales & Marketing | Email: luc@ltw-tech.com



Follow Us On

